

Comprehensive Melatonin Profile



63 Zillico Street
Asheville, NC 28801
© Genova Diagnostics

Patient: **SAMPLE**
PATIENT

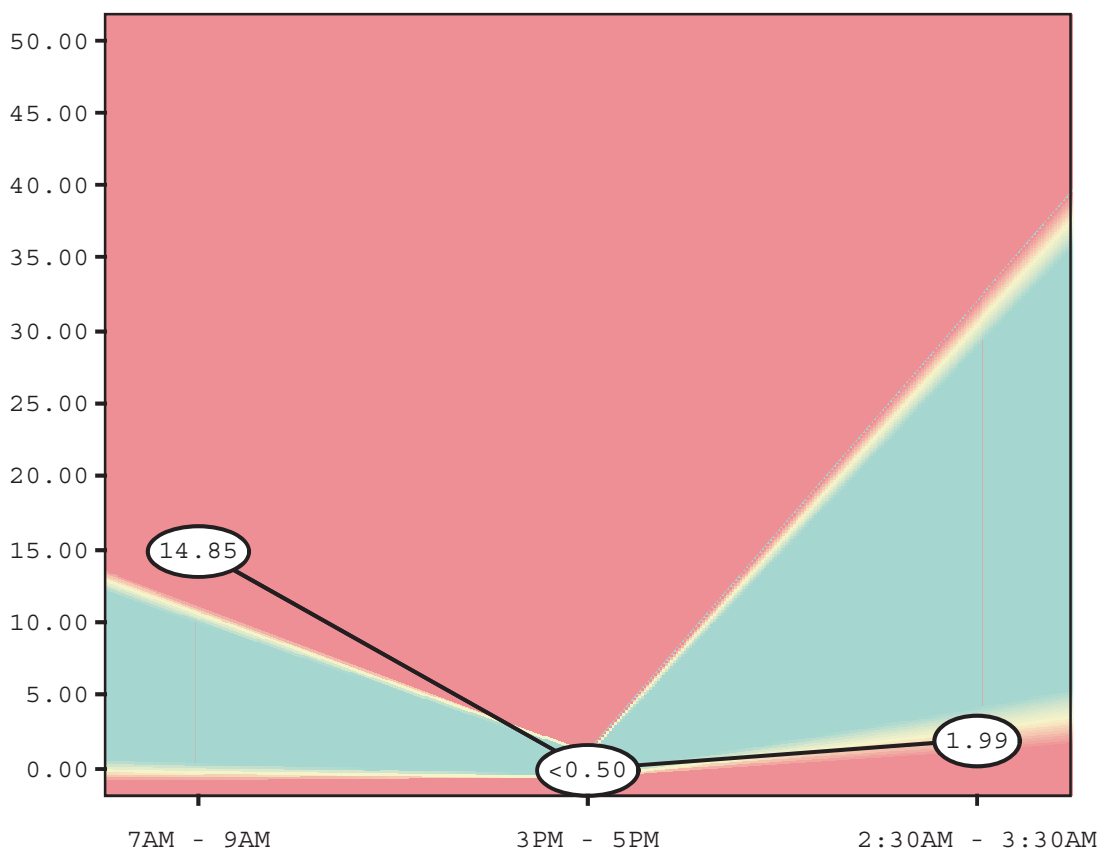
Age:

Sex:

MRN:

SAMPLE REPORT

Salivary Melatonin



Reference Range

7AM - 9AM: ≤ 10.50 pg/mL

3PM - 5PM: ≤ 0.88 pg/mL

2:30AM - 3:30AM: 2.53-30.67 pg/mL

This test has been developed and its performance characteristics determined by Genova Diagnostics, Inc. It has not been cleared or approved by the U.S. Food and Drug Administration.