

Patient: **SAMPLE**  
**PATIENT**

DOB:

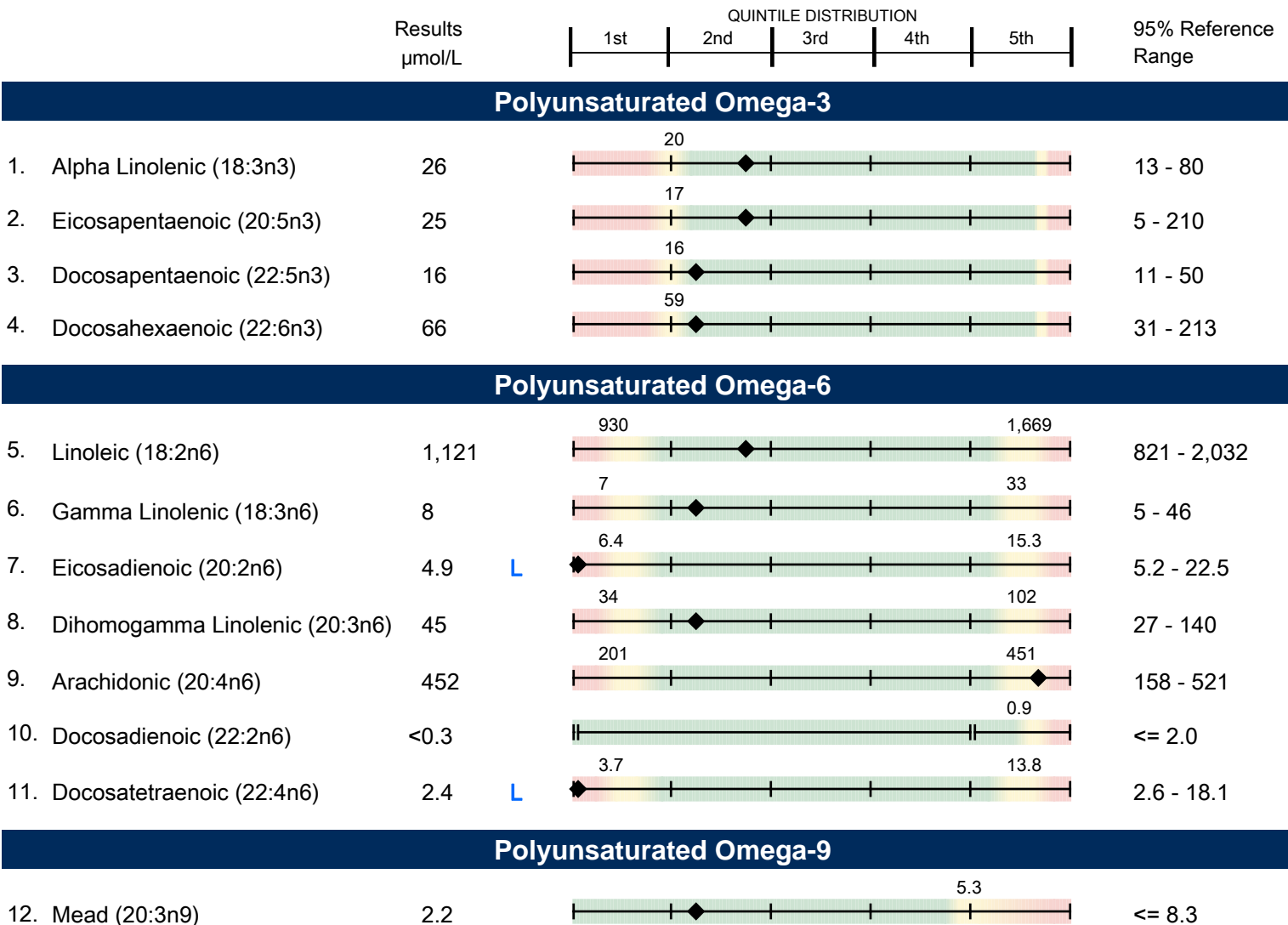
Sex:

MRN:

**0040 Fatty Acid Profile - Plasma**

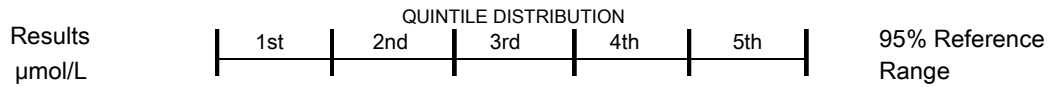
Methodology: Capillary Gas Chromatography/Mass Spectrometry

Ranges: Ages 13 and over



**0040 Fatty Acid Profile - Plasma**

Ranges: Ages 13 and over



**Monounsaturated**

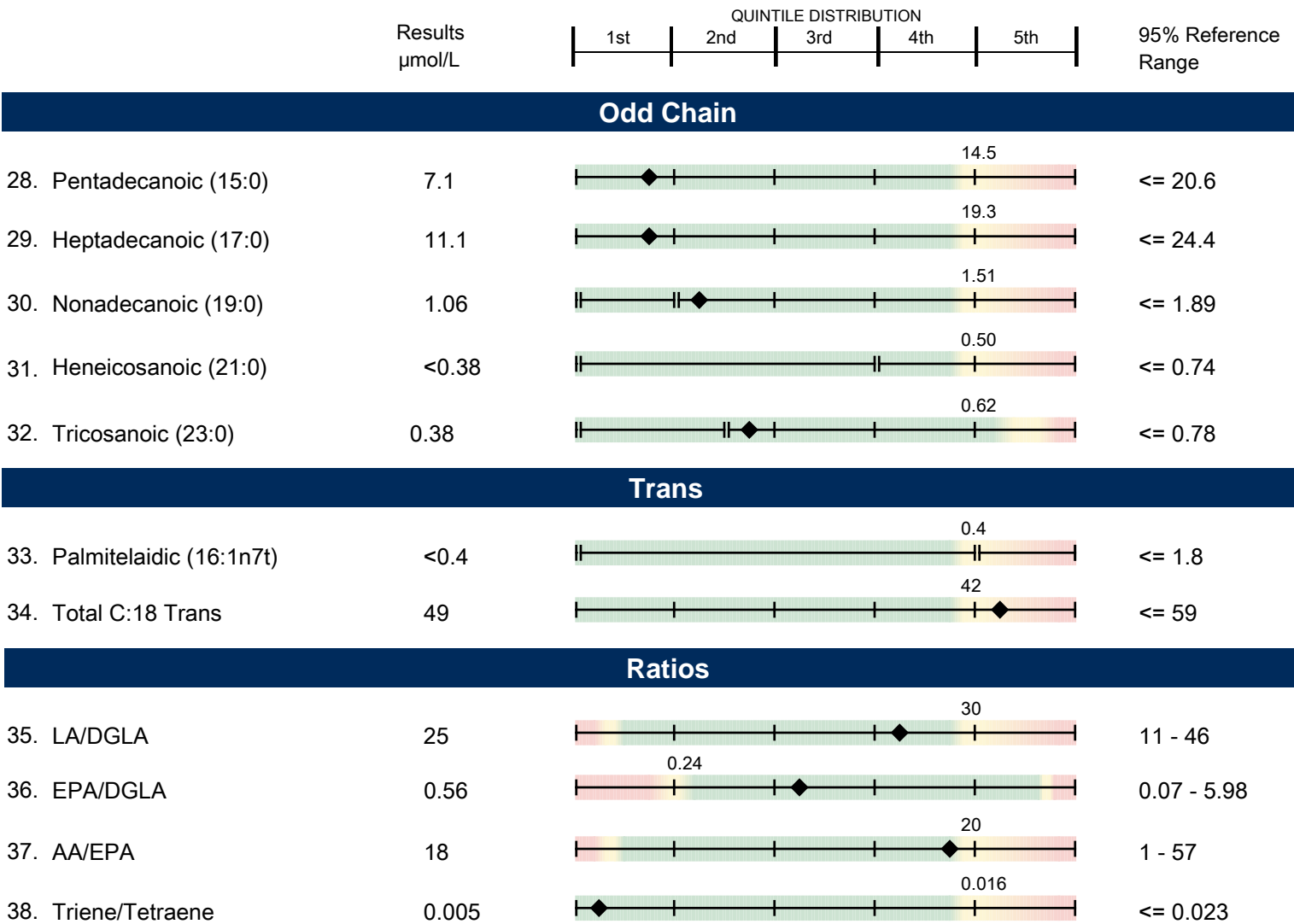
Results $\mu\text{mol/L}$	1st	2nd	3rd	4th	5th	95% Reference Range
13. Myristoleic (14:1n5)	1.2				6.1	0.8 - 9.7
14. Palmitoleic (16:1n7)	40				155	30 - 256
15. Vaccenic (18:1n7)	48				93	40 - 122
16. Oleic (18:1n9)	555				1,182	466 - 1,470
17. 11-Eicosenoic (20:1n9)	4.6				10.3	3.7 - 18.1
18. Nervonic (24:1n9)	1.1				2.2	1.1 - 2.7

**Saturated**

Results $\mu\text{mol/L}$	1st	2nd	3rd	4th	5th	95% Reference Range
19. Capric (10:0)	1.4				4.0	0.8 - 6.2
20. Lauric (12:0)	3.3				14.5	2.2 - 27.3
21. Myristic (14:0)	20				87	15 - 139
22. Palmitic (16:0)	792				1,794	667 - 2,526
23. Stearic (18:0)	294				511	250 - 629
24. Arachidic (20:0)	1.5				3.2	1.3 - 4.7
25. Behenic (22:0)	0.8				2.0	0.6 - 2.9
26. Lignoceric (24:0)	0.84				1.66	0.63 - 2.45
27. Hexacosanoic (26:0)					0.36	$\leq 0.43$

**0040 Fatty Acid Profile - Plasma**

Ranges: Ages 13 and over



NR = Not Reportable

This test has been developed and its performance characteristics determined by Genova Diagnostics, Inc. It has not been cleared by the U.S. Food and Drug Administration.